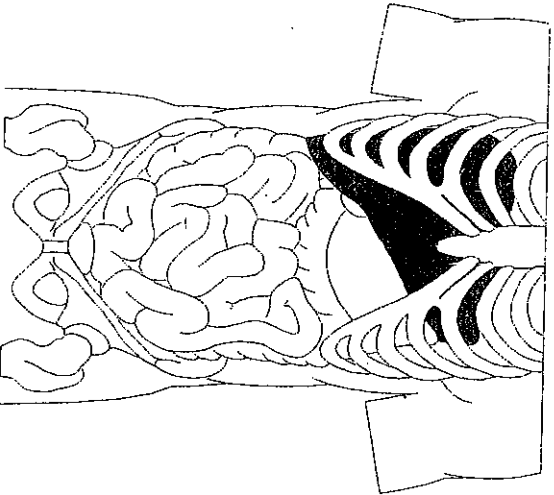


1. Draw all organs of the digestive system.
2. Each organ should be colored and properly labeled or included in a key.
3. In complete sentences explain the path of digestion. Tell where digestion begins and where it ends?



1. Pick one other system and explain how the digestive system is interrelated to it. (how they work together.)

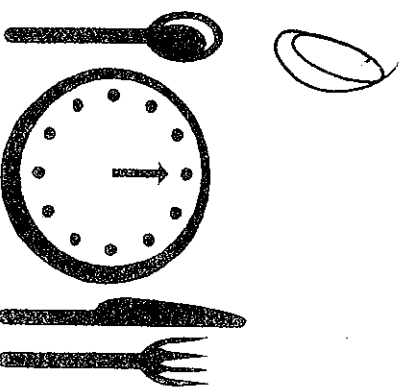
Example- Explain how the digestive system works together with the circulatory system.

Publishing company
and logo
(You make this up)

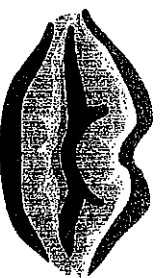
Your Name
Date
Period

1. Pick a digestive organ.
2. Write the organ vertically- as an acoustic.
3. Each sentence of the acoustic should tell something about the organ or the digestion process.

4. Draw your organ along with the organs located near it.



Digestion Brochure



1. Written in complete sentences- describe the location of your organ. Which side of your body is it located on and which organs are located near it?
2. What is the function of your chosen organ? What does it do to help the digestion process?
3. Research the organ and find specific details. How big is it? How long or wide? Is it the largest or smallest digestive organ? Does it work with another organ? Put answers in complete sentences.

Include a graphic

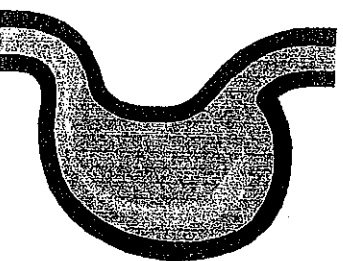
Page 2

1. Name 3 diseases that affect the digestive system and include a brief description of each.
2. Choose 1 of the 3 disease that affects your organ and answer the following questions in complete sentences.
 - Define and explain the disease.
 - What are the signs and symptoms?
 - How can you get the disease?
 - How can it be treated or cured?

Include a graphic

Page 3

1. Pick 5 digestive vocabulary words found anywhere in chapter
2. List each word and include a 2 sentence description.
3. The vocabulary words you choose must somehow relate to the organ that you chose. (example: The stomach is a muscular pouch that holds food. It churns food so that it may be further broken down by the small intestines.)



Chosen organ

Include a graphic

Page 4